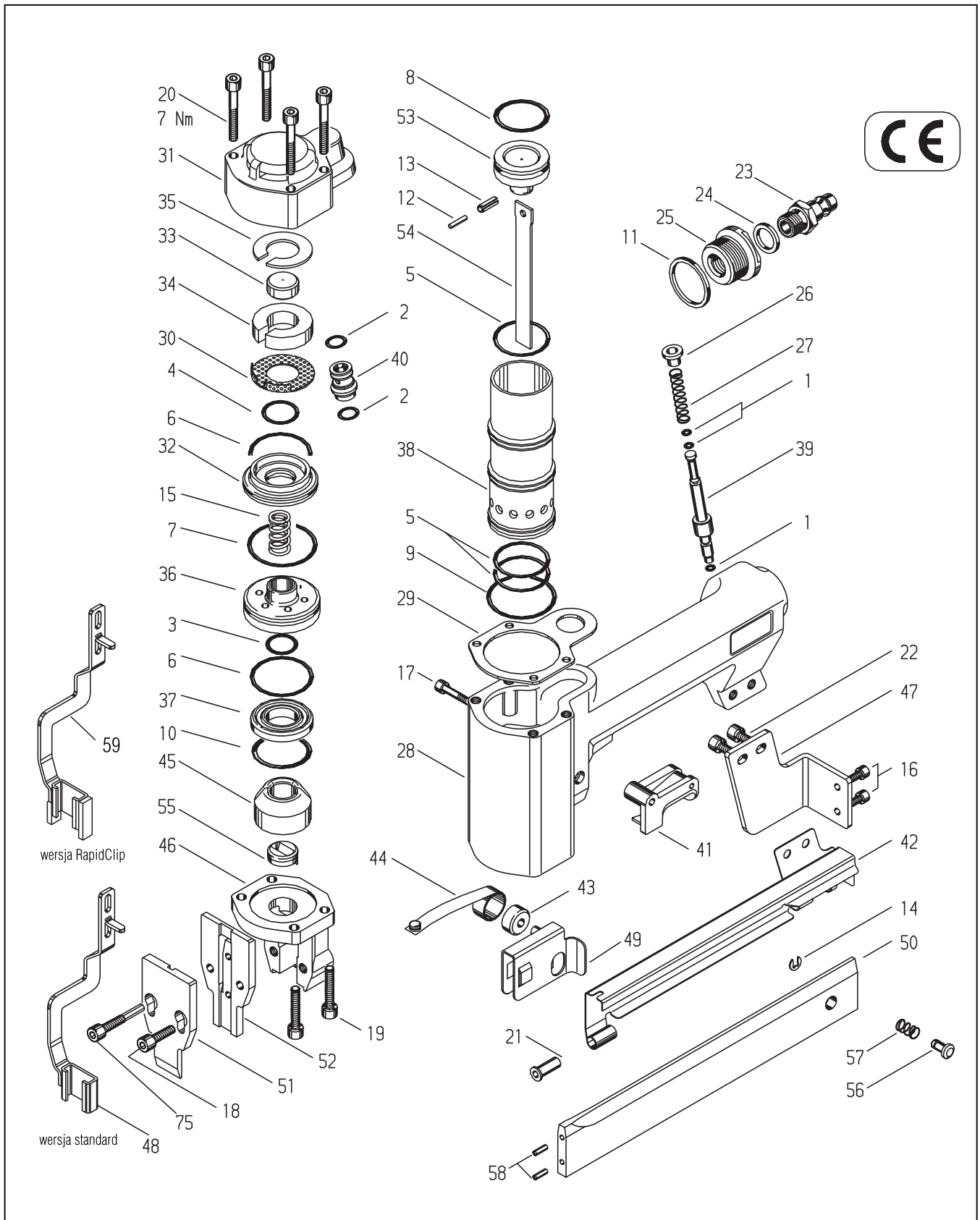


Typ
Type

14/32-613C (Art.-Nr. 12000215)
14/32-613C RapidClip



BeA Gruppe, Bogenstraße 43 - 45, 22926 Ahrensburg/Germany, Telefon +49 (0) 4102 78-0, Telefax +49 (0) 4102 78400 - 319
<http://www.bea-group.com>

BizeA Sp. z o.o. Tomice, ul. Europejska 4, 05-532 Baniocza, Poland
tel.: +48 22 244 17 00 ; fax: +48 22 244 52 77 ;
www.bizea.pl , e-mail: info@bizea.com.pl

Serwis: tel. +48 22 244 17 26
serwis@bizea.com.pl

BeA-Druckluftnagler Typ 14/32-613C

- [1] Abmessungen: L = 255 H = 198 B = 56,5 mm;
 [2] Gewicht: 1,4 kg.
 [3] Zulässiger Luftdruck: 8 bar,
 [4] empfohlener Betriebsdruck: 5 - 8 bar.
 [5] Luftverbrauch pro Eintreibvorgang bei 6 bar: 0,9 l freie Luft.
 [6] Eintreibgegenstand: BeA-Industrieklammern
 Typ: 14 und 155 ; 16 von 15 bis 32 mm.
 [7] A-bewerteter Einzelereignis-Schalleistungspegel $L_{Wa, 1s} = 87$ dB
 [8] A-bewerteter Einzelereignis-Emission Schalldruckpegel am Arbeitsplatz $L_{pA, 1s} = 79$ dB
 [9]*Vibrationskennwert liegt unter der Deklarationsgrenze

Diese Ersatzteilliste/Servicehinweise bildet mit dem beiliegenden Benutzer-Handbuch die Betriebsanleitung. Bitte vor Inbetriebnahme aufmerksam lesen und Sicherheitshinweise unbedingt beachten.

English

BeA Pneumatic Stapler Type 14/32-613C

This Spare parts list/service instructions and the enclosed Operator's Manual constitute the Operating Instructions. Before using read both and strictly observe safety instructions.

In the German section of the spare parts list the technical data are listed under codes [] (also see User Manual).

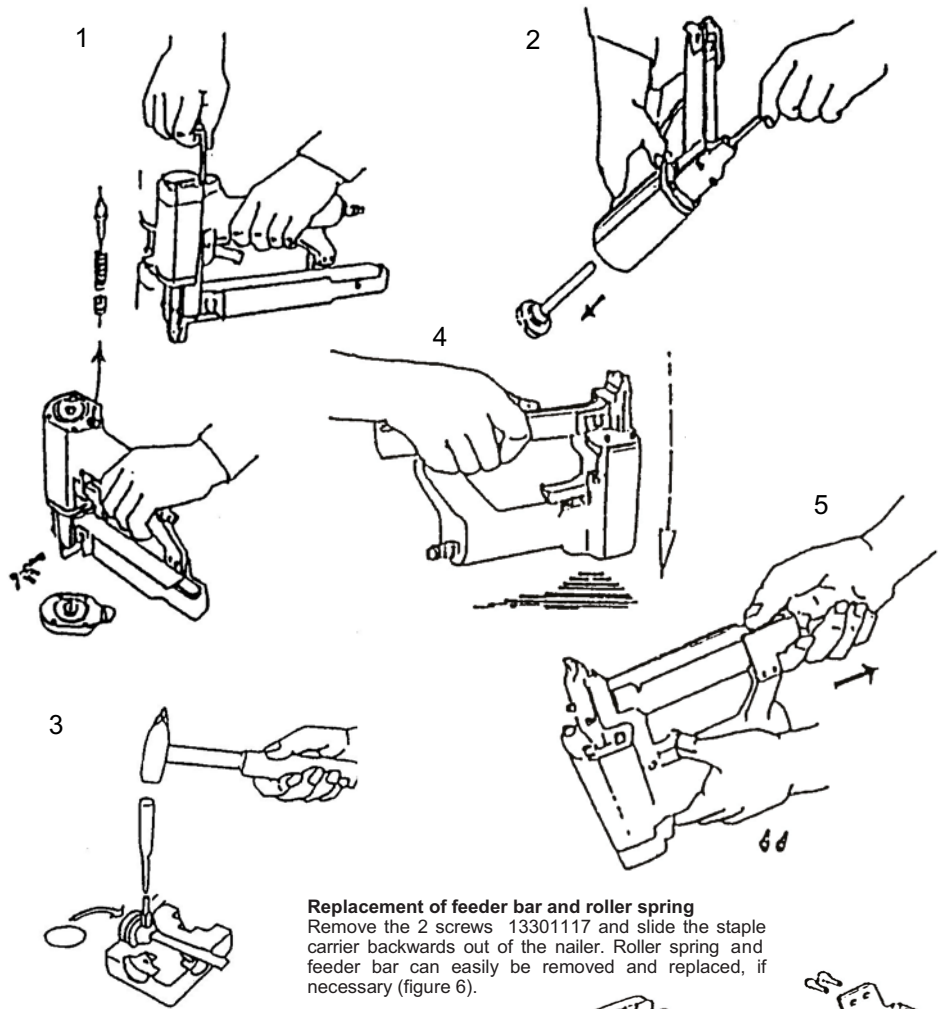
Attention! Always disconnect the tool from its air supply and empty magazine before attempting any repair. Always fix the cap with a torque wrench adjusted to 7 Nm.

Removing piston and driver blade

Take out 4 bolts 13301125 and remove the complete cap and valve shaft 14404334 (fig. 1). The piston with driver blade can now be removed by using a spare driver blade and pushing them from below (fig. 2). Use a pin punch 2.5 mm diameter and BeA mounting block 14401094 for removing the pin 13300175 and split pin 13300259 (fig. 3). Any damaged parts must be replaced. Before refitting, the piston O-ring should be greased with BeA special grease 13301706.

Changing bumper and cylinder

Remove cap, valve shaft and piston with driver blade as described above. Dismantle the O-Ring 13300109 using a small screwdriver. Then turn machine over and gently tap it on a flat wooden surface (figure 4). By the impact, cylinder and bumper will come out and can easily be removed from the housing. Replace any damaged parts and grease with BeA special grease 13301706 before refitting .

**Replacement of feeder bar and roller spring**

Remove the 2 screws 13301117 and slide the staple carrier backwards out of the nailer. Roller spring and feeder bar can easily be removed and replaced, if necessary (figure 6).

Changing of O-rings on valve system

Remove the cap as described above. Take main valve 14404331 out of the cap and replace worn O-rings. Grease O-rings with special BeA grease 13301706 .

1	O-Ring	13300002	25	Reduzierstück Reducing bush	14401608	37	Einlaßventilring Valve ring	14404332	49	Schubkasten Feeder bar	14404407
2	O-ring	13300008									
3		13300012	26	Federteller Disc	14402118	38	Zylinder Cylinder	14404333	50	Klammerträger Staple carrier	14405677
4		13300013									
5		13300022	27	Druckfeder Pressure spring	14402119	39	Ventilstange Valve shaft	14404334	51	Werkzeug Teil 1 Front nose	14404409
6		13300024									
7		13300026	28	Gehäuse Body	14404319	40	Ventilbuchse Valve bush	14404335	52	Werkzeug Teil 2 Back nose	14405676
8		13300080									
9		13300109	29	Dichtung Gasket	14404323	41	Ventilhebel Trigger	14404337	53	Kolben Piston	14404411
10		13300117									
11	Dichtring Gasket	13300159	30	Lochblech Perforated plate	14404324	42	Abdeckschiene Cover	14404357	54	Treiber Driver blade	14404412
12	Stift Pin	13300175	31	Kappe Cap	14404325	43	Spule Spool	14404360	55	Treiberführung Driver guide	14404413
13	Spannhülse Split pin	13300259	32	Kappenscheibe Cap disc	14404327	44	Rollfeder Roller spring	14404361	56	Vorschieberarretierung Pusher stop	14405507
14	Sicherungsscheibe Circlip	13300347	33	Dichtscheibe Gasket	14404328	45	Puffer Bumper	14404369	57	Druckfeder Pressure spring	14404618
15	Druckfeder Pressure spring	13300910	34	Schalldämpfer Silencer	14404329	46	Kopfstück Nose housing	14404404	58	Zylinderstift Pin	13300197
16	Zylinderschraube Allen bolt	13301103	35	Scheibe Disc	14404330	47	Lasche Hook plate	14404405	59	Auslösebügel mit RapidClip Anschlag Safety yoke - RapidClip attachment	14400885
17		13301110	36	Hauptventil Main valve	14404331	48	Auslösebügel Safety yoke	14404406	75	Zylinderschraube Allen bolt	14406353
18		13301120									
19		13301123									
20		13301125									
21	Buchse bushing	14404607									
22	Schraube Screw	13301117									
23	Anschlußsnippel Air hose connector	14000248									
24	Dichtscheibe Gasket	14400063									