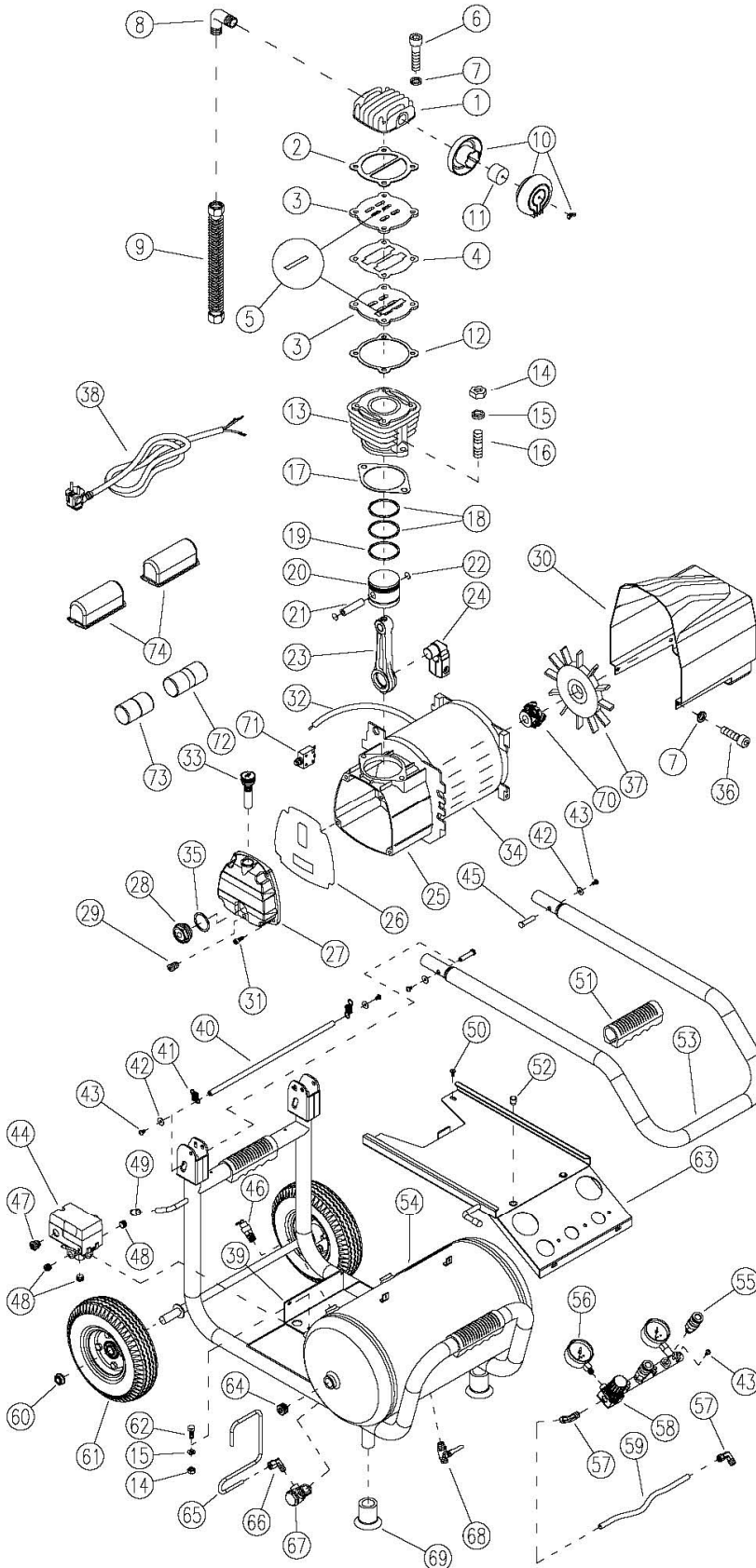


KOMPRESOR PUMPER 256-20



INDEX:256-20

REF. NO.	DESCRIPTION	PART NO.	QTY
1	Cylinder head	101001	1
2	Cylinder head packing	211011	1
3	Inlet & Exhaust valve seat	104005	2
4	Inlet & Exhaust valve seat packing	212006	1
5	Inlet & Exhaust valve plate	125004	2
6	In six-angle bolt	352087	4
7	Spring washer	382004	8
8	Exhaust elbow	151404	1
9	Exhaust tube ass'y	230092S	1
10	Air filter	170006	1
11	Air filter (element only)	171002	1
12	Valve seat Packing	213017	1
13	Cylinder	201017	1
14	Set nut	371005	6
15	Spring washer	382005	6
16	Double head screw	358001	2
17	Cylinder packing	214010	1
18	Compression ring	206003	2
19	Oil control ring	207003	1
20	Piston	203011	1
21	Piston pin	204003	1
22	Piston pin snap ring	205001	2
23	Rod	316001	1
24	Crankshaft	302001	1
25	Crankcase	301001	1
26	Front cover packing	215001	1
27	Front cover	304014	1
28	Oil gauge	321001	1
29	Oil draining plug	360001	1
30	Motor cover	433001	1
31	In six-angle bolt	352091	5
32	Cable wire	453002	1
33	Air flue oil filling assembly	324003	1
34	Motor	251333	1
35	Oil gauge packing	217001	1
36	In six-angle bolt	352071	4
37	Radiation fan	431012	1
38	Power wire	452024	1
39	Base Plate	488009	1
40	Steel bat	405005	1
41	Spring buckle	486004	2
42	Plate washer	381024	4
43	Round-head bolt	365003	7
44	Pressure switch	412018	1
45	PIN	405004	2
46	Safety valve	407006	1
47	Strain Relief Clip	457002	1
48	Plug	360011	3
49	Cup	439008	2
50	Round-head bolt	365004	4
51	Rubber handle (1 1/4")	435016-1	3
52	Peah	480454	2
53	handle	488036	1
54	Air tank	401162CE	1
55	Quick Coupler	447015	2
56	Pressure gauge	411043	2
57	Elbow	151209	2
58	Regulator valve	410014	1
59	Unloading tube	247040	1
60	Tank wheel nut	403003	2
61	Tank wheel	402007	2
62	Out six-angle bolt	351063	4
63	Air hose plate	488027	1
64	Plug	360004	2
65	Unloading tube assembly (1/4")	228070	1
66	Unloading elbow	151002	1
67	Check valve	409004	1
68	Drain cock	413008	1
69	Tank feet	434009	2
70	Centrifugal switch	459008	1
71	Overload switch	458006	1
72	Start capacitor	460005	1
73	Run capacitor	462007	1
74	Capacitor cover	455018	2