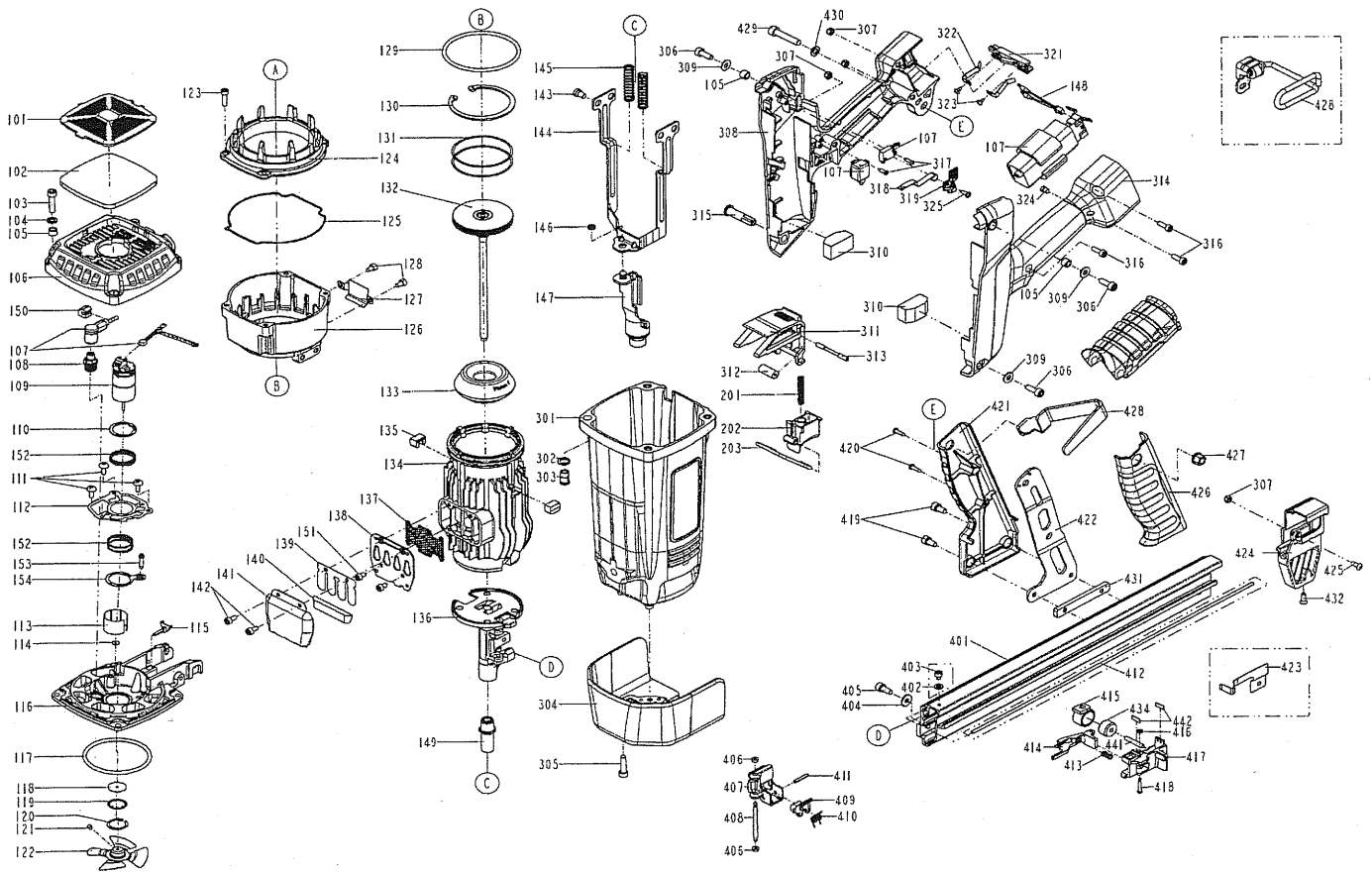


DIAGRAM OF NC38 BETTY



ITEM NO.	PART NO.	DESCRIPTION	ITEM NO.	PART NO.	DESCRIPTION	ITEM NO.	PART NO.	DESCRIPTION
101	11371-1154702-1	DEFLECTOR	140	1139L-1150001-1	CLEANER	323	2040107-01040-0	TAP BOLT
102	1137N-1150001-1	FILTER	141	113A3-1150001-1	DEFLECTOR	324	113AP-1150001-1	LED COVER
103	2040101-03110-0	HEX.SOC.HD.BOLT	142	2040101-02040-5	HEX.SOC.HD.BOLT	325	2040108-01020-5	SELF TAPPING BOLT
104	2040201-03050-0	FLAT WASHER	143	1138W-1154701-1	HEX.SOC.HD.BOLT	401	11389-1274701-1	MAGAZINE A
105	1136P-1154701-1	COLLOR	144	11332-1274701-1	SAFETY B	402	2040202-02010-0	FLAT WASHER
106	11369-1155101-1	CAP	145	11337-1154701-1	SAFETY SPRING	403	2040101-02010-2	HEX.SOC.HD.BOLT
107	1120G-1150001-3	PCB ASSEMBLY	146	1131G-0794702-1	FIXED RING	404	2040202-03010-0	FLAT WASHER
108	1120D-1154701-1	SPARKLER	147	11331-1274701-2	SAFETY A	405	2040100-03090-3	BOLT ASSY
109	1120N-1150006-1	MOTOR UNIT	148	113CA-1150801-1	SOURCE	406	1135H-0790001-1	PU RETAINER
110	2040304-53010-0	EX-CONCENTRIC RING	149	11398-1274701-1	LATCH SPRING BUSHING	407	113AT-1274702-2	DOOR
111	2040102-02043-5	HALF ROUND HD.HEX.BOLT	150	1136H-1154705-1	RAFT HOOK BRACKET	408	11362-0784702-1	DOOR SHAFT PIN
112	1131J-1154702-1	POSITIONING SHEET	151	2040101-02030-5	HEX.SOC.HD.BOLT	409	11310-0254702-2	DOOR LATCH
113	11398-1150002-1	SLEEVE MOTOR	152	1138J-1150002-1	SPRING	410	11311-1274701-1	LATCH SPRING
114	11380-1150001-1	WASHER-MOTOR SHAFT	153	113CK-1150001-1	POSITIONING SHAFT	411	2040400-05090-0	SPRING PIN
115	113A6-1151101-1	FUEL STEM ADAPTER	154	1131C-1154704-1	RING A	412	11377-1274701-1	FLAT BAR
116	1139U-1150001-2	END CAP-COMBUSTION CHAMBER	201	11319-1154701-1	SPRING	413	1136F-0374701-1	SPRING
117	2041104-06070-0	O- RING	202	11316-1154701-1	TRIGGER	414	11363-1274701-2	PUSHER
118	1136X-1150001-1	SEAL	203	11335-1150001-1	SAFETY	415	11372-1094701-1	SPRING
119	11323-1150003-1	SEAL PLATE-MOTOR	301	11230-115A303-1	GUN BODY UNIT	416	1131D-0460001-1	URETHANE RETAINER
120	2040303-35010-0	IN-CONCENTRIC RING	302	11380-1154702-1	WASHER CAP	417	1136E-1274701-2	PROTECTING HOOD COVER
121	2040104-02010-5	HEX.SOC.HD.SCREW	303	11398-1150001-1	CAP NUT	418	11324-0684701-1	FIXED PIN
122	1120C-1150001-2	COOLING FAN ASSEMBLY	304	11260-1274701-1	CONNECTION PLATE-NOSE	419	2040100-03110-0	BOLT ASSY
123	2040101-02080-4	HEX.SOC.HD.BOLT	305	2040101-03090-2	HEX.SOC.HD.BOLT	420	2040107-01100-0	TAP BOLT
124	113AE-1150001-1	UPPER COMBUSTION CHAMBER	306	2040101-03070-2	HEX.SOC.HD.BOLT	421	11397-1274702-1	ATTACHMENT PLATE COVER B
125	1132M-1150901-1	PACKING	307	2040500-02010-0	LOCK NUT	422	11323-1274702-1	POSITIONING SHEET
126	1139V-1150001-1	COMBUSTION CHAMBER	308	1137K-1154703-1	HANDLE A	423	1130S-1274701-1	STOP NAI PLATE
127	1139B-1150001-2	WASHER	309	2040201-03040-0	FLAT WASHER	424	11390-1274701-2	PROTECTING HOOD COVER
128	2040101-02020-2	HEX.SOC.HD.BOLT	310	1138W-1270001-1	SPACER	425	2040102-02040-0	HALF ROUND HD.HEX.BOLT
129	2041104-07061-0	O-RING	311	113A7-1154701-1	FUEL ACTUATOR	426	11397-1274701-1	ATTACHMENT PLATE COVER A
130	2040300-14010-0	C- RING	312	11398-1154701-1	BUSH-FUEL ACTUATOR	427	2040501-04010-0	BOLT CAP
131	11350-1154701-1	PISTON RING	313	11325-1154702-1	PIN-FUEL ACTUATOR	428	1133D-1154701-1	SPRING RETAINER
132	11204-1270002-2	DRIVER UNIT	314	1137K-1154702-2	HANDLE B	429	2040101-04110-0	HEX.SOC.HD.BOLT
133	11327-1154701-1	BUMPER	315	11325-1154701-1	HANDLE BOLT	430	2040201-04010-0	FLAT WASHER
134	11320-1150003-1	CYLINDER	316	2040101-02060-0	HEX.SOC.HD.BOLT	431	11380-1274701-1	GASKET
135	1134W-1154704-1	BUMPER-COMBUSTION CHAMBER	317	2040108-01010-0	SELF TAPPING BOLT	432	2040107-02111-0	TAP BOLT
136	11382-1274702-2	NOSE PIECE	318	113AH-1150001-1	MOTOR FAN SWITCH LEVER	434	11386-1260001-2	ROLLING ELEMENT
137	1139W-1150001-2	EXHAUST MESH PLATE	319	11323-1154703-1	BRACKET-MOTOR FAN SWITCH LEVER	441	11324-1274701-1	FIXED PIN
138	113A0-1150001-1	EXHAUST BAFFLE	321	1136H-1154701-1	BATTERY NODE BRACKET	442	1135G-1274701-1	RUBBER PAD
139	1139X-1150001-2	REED VALVE	322	113A8-1150001-1	BATTERY NODE			